



High Performance Biostimulant

Eco-SW is a premium biostimulant derived from *Ascophyllum nodosum*, a seaweed extract known for enhancing plant health and improving resilience under stressful conditions. The active compounds - mannitol, betaines, amino acids, and sugar derivatives - support a range of benefits that optimize plant performance, even in challenging environments.

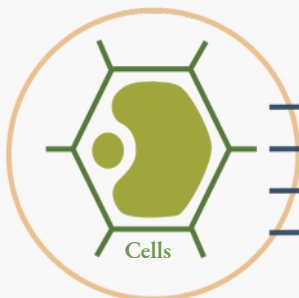
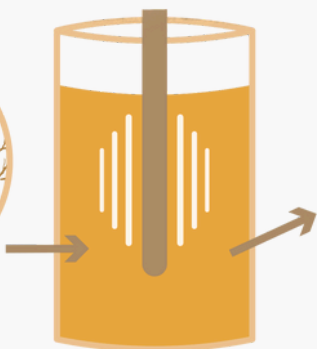
Key Benefits

- **Stress Mitigation:** Reduces the negative impact of drought, heat, cold and salinity stress, improving overall plant health and growth.
- **Enhanced Growth:** Boosts chlorophyll synthesis and improves nutrient uptake for stronger plant
- **Biological Performance Boost:** Utilizes powerful bioactive compounds to enhance plant resilience and stress tolerance

Extraction Process Tailored to Isolate Active Compounds



Ascophyllum nodosum



Cells

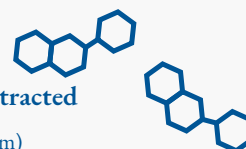
Active Compounds Extracted

Mannitol (15,000-20,000 ppm)

Betaines (10,000-20,000 ppm)

Organic & Amino Acids (35,000-45,000 ppm)

Polysaccharides & Glucosides (10,000-20,000 ppm)



Guaranteed Analysis

Soluble Potash (K_2O)2.0%

Derived from: Kelp Extract (*Ascophyllum nodosum* and Potassium Hydroxide*)

* Potassium Hydroxide as an extraction agent.

Application & Use

Foliar Applications

Field Crops, Row Crops, Vegetables and Small Fruit: Apply 1-4 pts per acres in a minimum of 10 gallons of spray solution per acre for ground rigs and a minimum of 2.5 gallons of water per acre for aerial applications.

Tree Crops (Nuts and Fruit) & Vines: Apply 1-4 qts per acres in a minimum of 50 gallons of spray solution.

Soil Applications may also be made and are best as a precision application in the root zone and may be made by drip, sprinkler or furrow irrigation systems or in band applications. For trees or individual plants, the product may be diluted as above or sprinkled directly on the soil uniformly under the plant's drip line, then watered.

To learn more or to find an Evolve dealer near you, contact us today at info@evolveagllc.com

evolveagllc.com

EVOLVE
CROP SYSTEMS



Liquid Seaweed Extract

GUARANTEED ANALYSIS 0-0-2

Soluble Potash(K₂O).....2.0%

Derived from: Kelp Extract (Ascophyllum nodosum and Potassium Hydroxide*)

* Potassium Hydroxide as an extraction agent.

GENERAL INFORMATION

Eco-SW is a liquid fertilizer enriched with seaweed extract to improve uptake.

RATE RECOMMENDATIONS

FIELD AND ROW CROPS

Foliar Applications: Field Crops, Row Crops, Vegetables and Small Fruit – apply 1-4 pts per acres in a minimum of 10 gallons of spray solution per acre for ground rigs and a minimum of 2.5 gallons of water per acre for aerial applications.

Soil Applications may also be made and are best as a precision application in the root zone and may be made by drip, sprinkler or furrow irrigation systems or in band applications. For trees or individual plants, the product may be diluted as above or sprinkled directly on the soil uniformly under the plant's drip line, then watered.

Optimum rate of application will vary depending on treatment interval, soil properties (such as pH, organic matter content, texture), weather conditions, time of year and plant species.

MIXING AND HANDLING INSTRUCTIONS

Fill mix tank with half of required water volume and begin agitation. Add products in this order, mixing thoroughly after each addition: adjuvants, pesticides, then fertilizers. Fill tank with remainder of water and continue agitation until solution is completely mixed. Check chemical mixture compatibility using a jar test prior to application.

Do not apply near water, storm drains, or drainage ditches. Do not apply if heavy rain is expected. Apply this product only to your lawn/garden. Check with your local Cooperative Extension Agency to obtain specific information on local turf best management practices.

Precautionary Statements: Based on currently available data, this product is not classified as a hazardous substance. However, observe good industrial hygiene practices. Wash hands after handling. Storage and Disposal: Do not contaminate water, food or feed by storage or disposal. Keep out of reach of children. Store away from incompatible materials. Dispose of contents/container in accordance with local authority requirements.



WARNING: Causes skin irritation. Causes serious eye irritation.

WARRANTY: Directions for Use of this product reflect the opinion of experts based on field use and tests. The directions are believed to be reliable and should be followed carefully. However, it is impossible to eliminate all risks inherently associated with the use of this product. Crop injury, ineffectiveness, or other unintended consequences may result, because of such factors as weather conditions, presence of other materials, or the manner of use or application all of which are beyond the control of Evolve Crop Systems or the Seller. All such risks shall be assumed by the Buyer. Evolve Crop Systems warrants that this product conforms to the chemical description on the label and is reasonably fit for the purposes referred to the Directions for Use subject to the inherent risks referred to above. Evolve Crop Systems makes no other express or implied warranty. In no case shall Evolve Crop Systems or the Seller be liable for consequential, special, or indirect damage resulting from the use or handling of this product. Evolve Crop Systems and the Seller offer this product, and the Buyer and User accept it, subject to the foregoing Conditions of Sale and Warranty, which may be varied only by an agreement in writing signed by a duly authorized representative of Evolve Crop Systems.

Eco-SW is a Trademark of Evolve Ag

11/25

Net Contents: 2.5 gallons (9.46 liters)

Packaged: 2 x 2.5 gallons (9.46 liters)

Weight: 21.6 lb (9.7 kg)



Manufactured for Evolve Crop Systems.
2178 East Bethel Rd Attica, IN 47918

